

formfusion[®]

Document Enhancement and Distribution Solution

FormFusion – Test Print Template

Document Version 1.0

Last Updated 8.16.2011

Table of Contents

Introduction.....	3
Running the Test Print Template.....	3
Tips & Tricks.....	5

Introduction

Authorized FormFusion users can run an existing input file through FormFusion 3.x from the FormFusion Developer client. To make this easier, we have created the Test Print Template. The Test Print Template allows a user to reprocess jobs through FormFusion without going through the Banner Job Submission form. The Test Print Template can be used to reprint a job or run tests.

Running the Test Print Template

This feature requires FormFusion Developer Client version 3.1.0.242 or newer in MAPS. Please consult with your MAPS Administrator and Check For Updates in the MAPS Configuration Tool.

To get started, launch the FormFusion Developer and navigate to the Print Parameter for the FormFusion template. The following example displays the dialog window for the Print Parameter's right-click context menu (shown below). After selecting Test Print Template, the Print Template dialog window will appear (Figure 2).

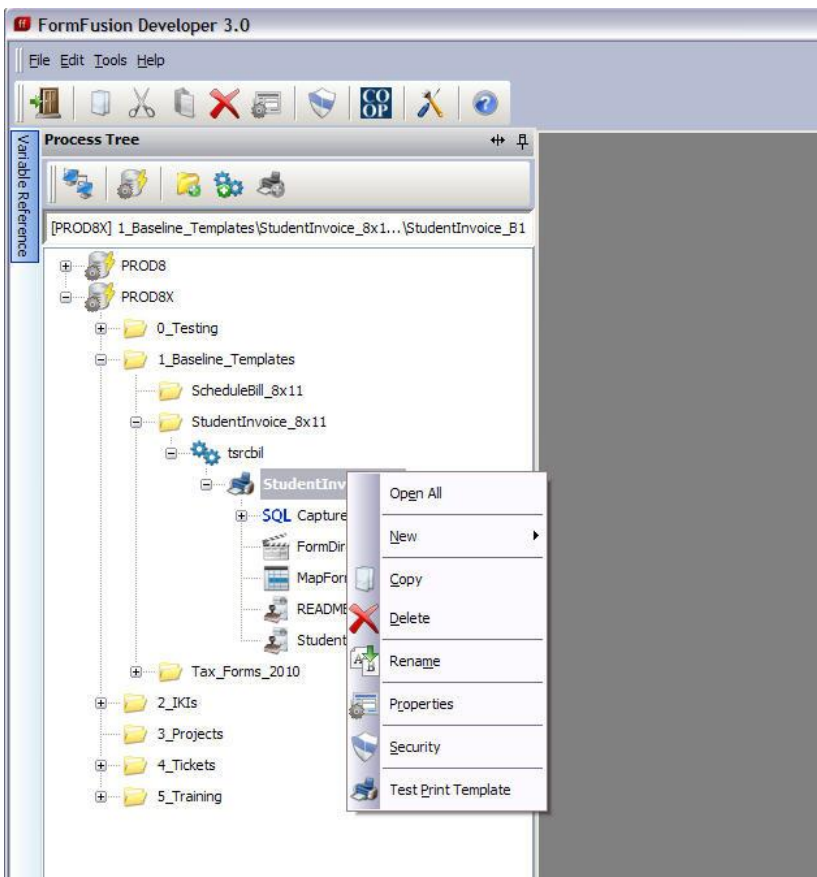


Figure 1 – Print Parameter context menu

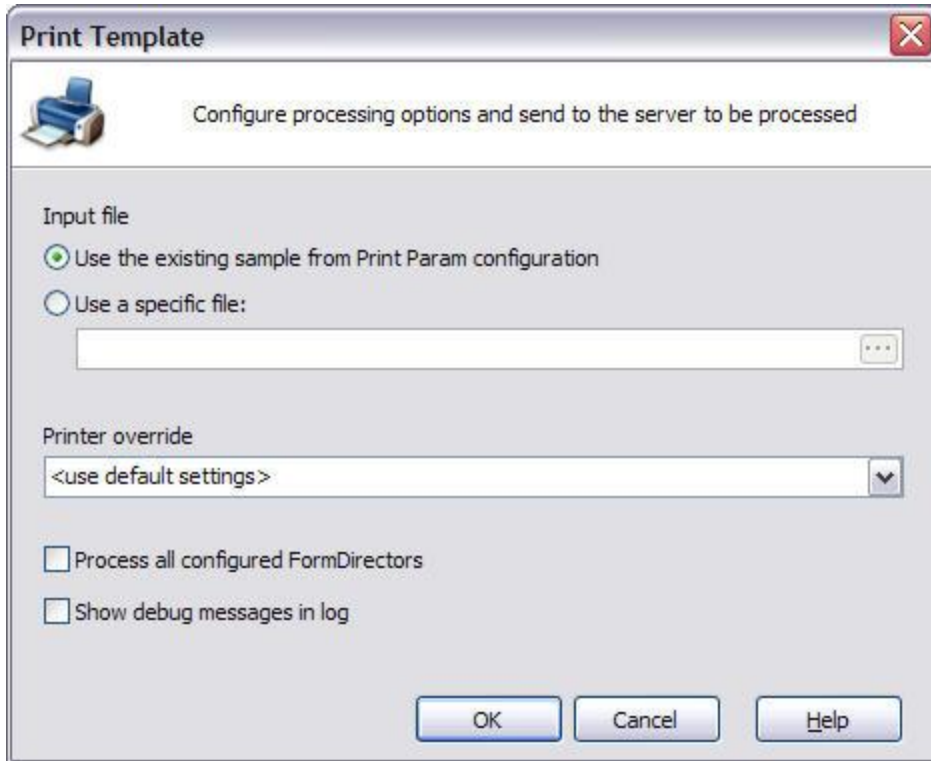


Figure 2 – Print Template dialog window

Print Template Configuration

Use the existing sample from Print Param configuration – This will process the lis file imported in MapForm for the template.

Use a specific file – User can select an input file from the file system.

Printer override – User can use the default printer settings or specify a printer. The default printer is the Environment printer. The printer will require setup in MAPS and allow authorization to FormFusion for the printer to appear in the drop-down menu.

Process all configured FormDirectors – When unchecked, the process will only print. User can select the checkbox to execute the FormDirector settings.

Show debug messages in log – Displays debug information in the Process Log dialog window.

Tips & Tricks

We suggest doing the following:

- Run the Test Print Template on the MAPS host server
- To use a specific file configuration, copy the lis file produced from the original Banner job process to the MAPS host server